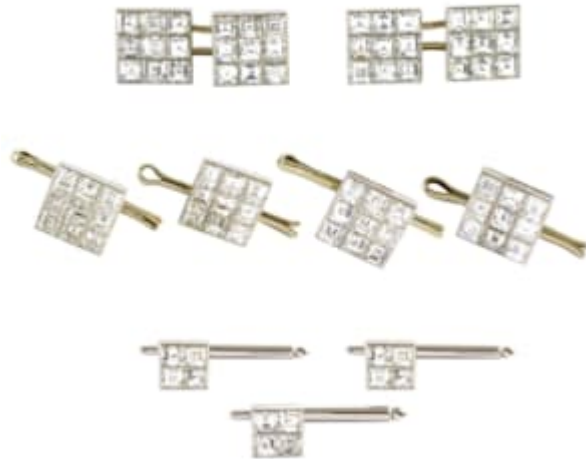


S.J. PHILLIPS



Diamond square panel gentleman's dress set by Van Cleef & Arpels, Paris, with a pair of cufflinks, four buttons and three studs,

channel and collet set with square carre cut diamonds in platinum with white gold fittings, signed 'VAN CLEEF & ARPELS' and with serial numbered 80.181 to the cufflinks, 'V.C.A.' and 87.132 to the buttons with fittings, French assaymarks and CHP workshop marks to all, the studs unsigned but with same workshop mark and of same make, also stamped 14K to sprung stud fittings, approximately 16.80cts of diamonds together with a VCA case in grey suede

Larger panels 1cm / 3/8" square

Smaller panels 0.7cm / 2/8" square

Weight: 30.5g