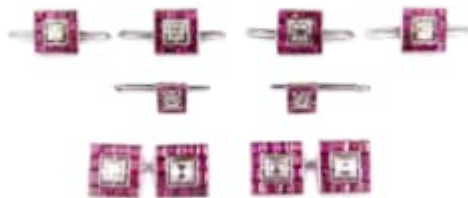


**S.J. PHILLIPS**



**Ruby and diamond square panel gentleman's dress set, comprising a pair of cufflinks, four buttons and two studs**

, each panel centred by a square cut diamond collet set to a pierced section, channel set border of calibre cut rubies, mounted in platinum with 14ct white gold fittings, diamond approximately 2.60cts

Larger square width 11mm

Weight: 28.5g